



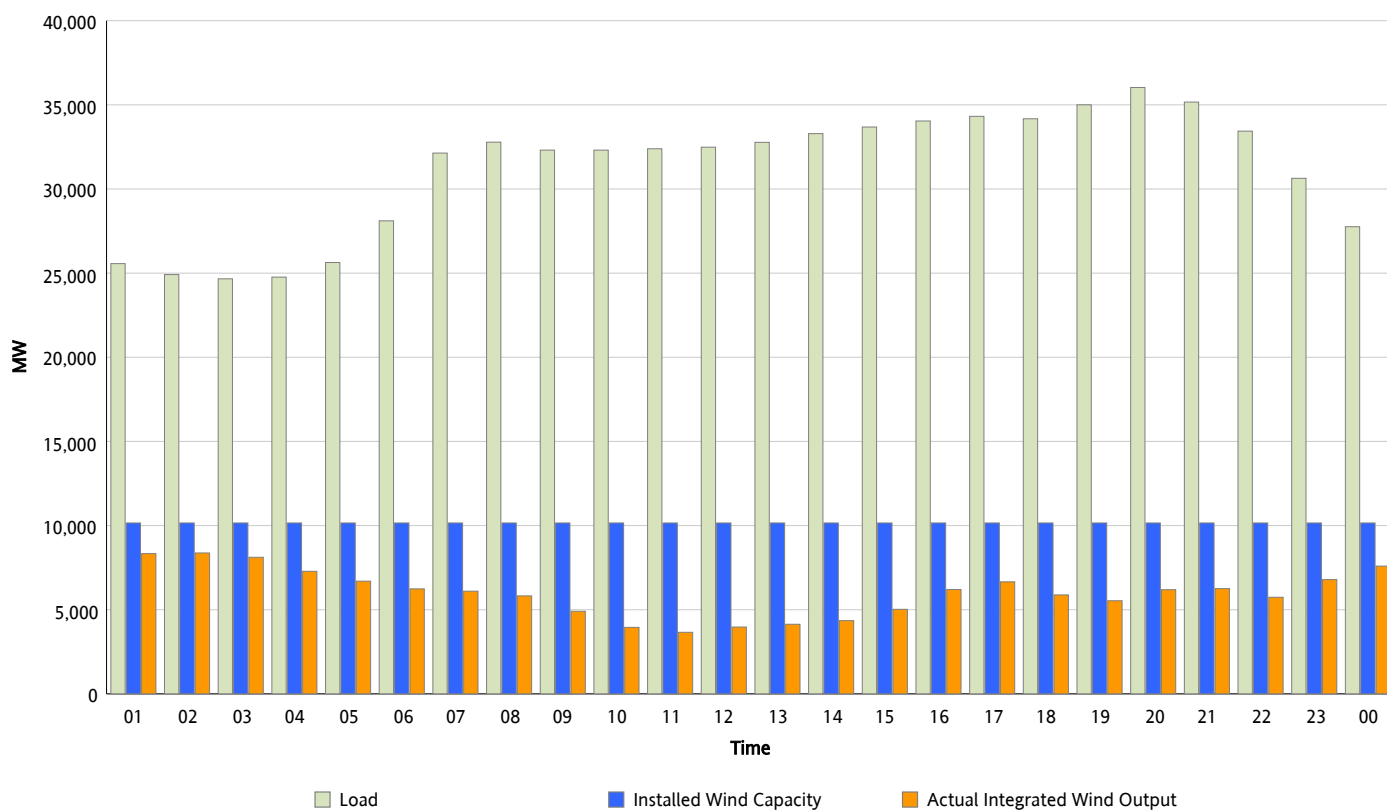
ERCOT Grid Operations

Wind Integration Report : 03/04/2013

Peak Load	36,032 MW
Load Peak Hour (HE)	20
Wind Over Peak	6,190 MW
Wind Record 02/09/13	9,481 MW
Max Wind Value*	8,448 MW
Wind Peak Time	01:26
Wind Integration %	33.82 %

Hourly Average Actual Load vs. Actual Wind Output

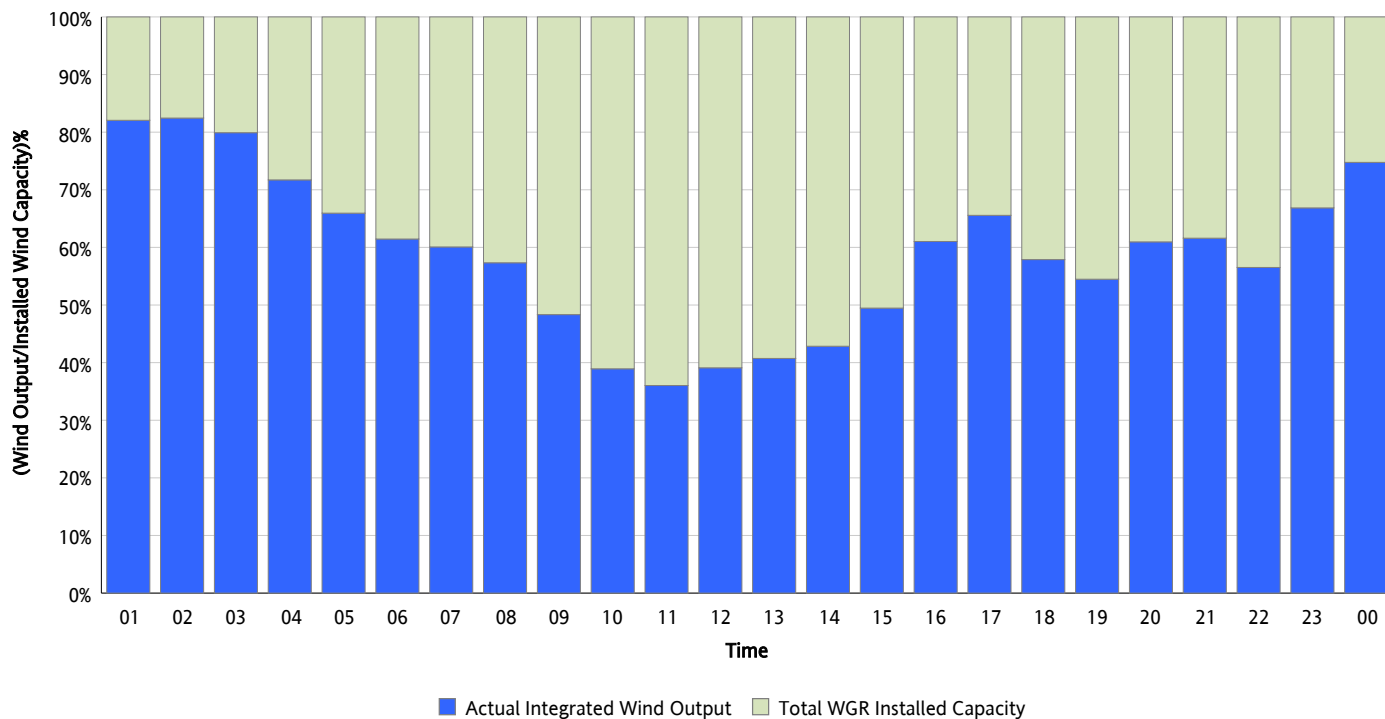
03/04/2013



* Wind Record and Wind Max represent instantaneous values and the rest of the values are integrated over the hour

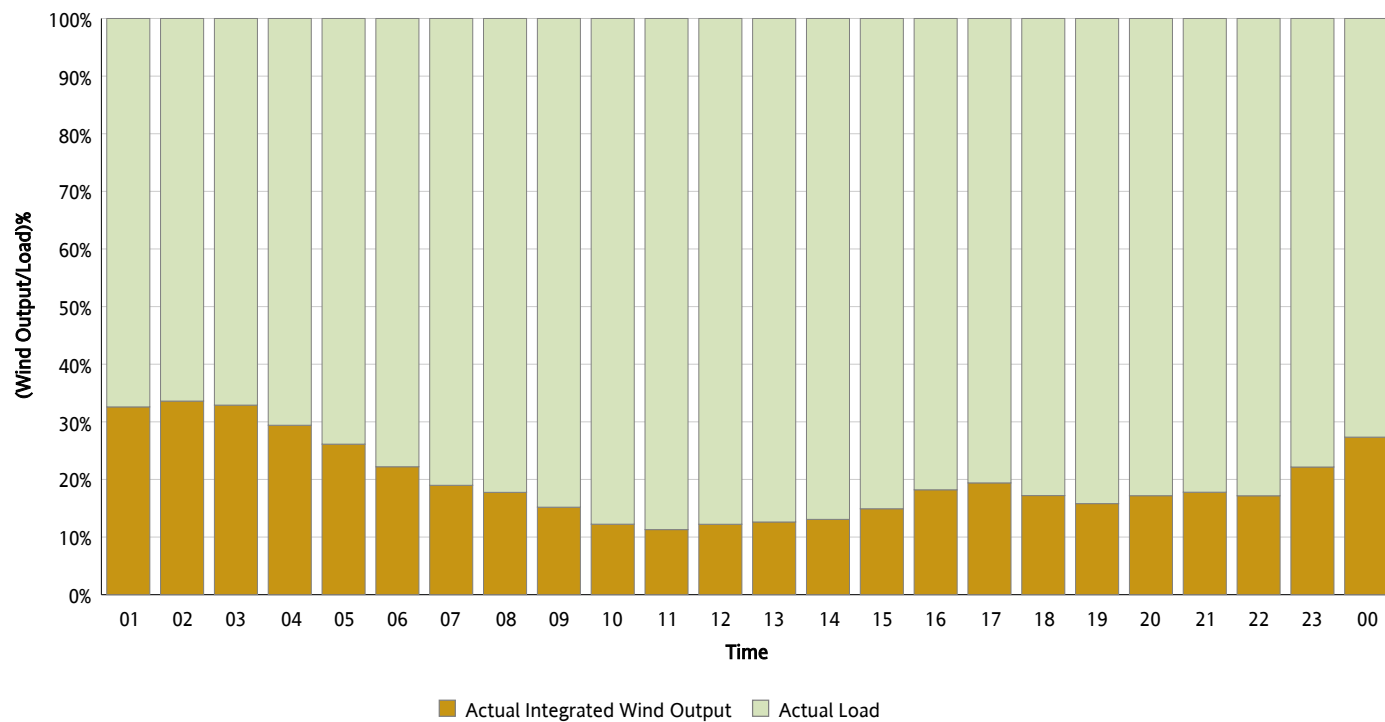
Actual Wind Output as a Percentage of the Total Installed Wind Capacity

03/04/2013



Actual Wind Output as a Percentage of the ERCOT Load

03/04/2013



ERCOT Load vs. Actual Wind Output

02/25/2013 - 03/04/2013

